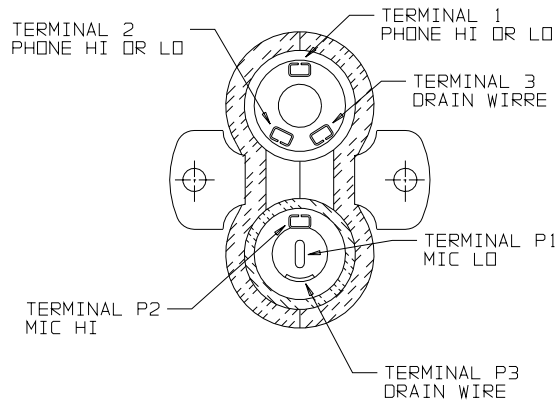
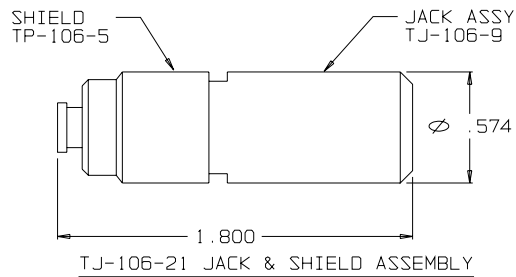
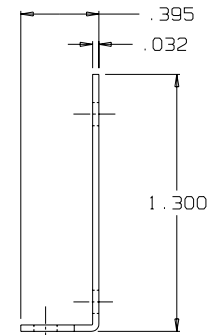
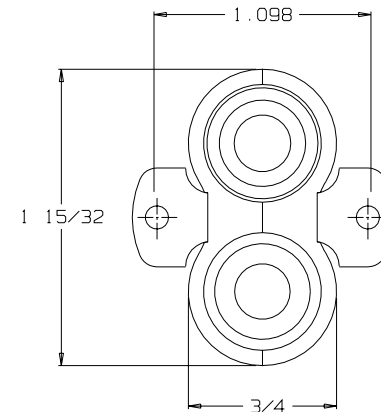
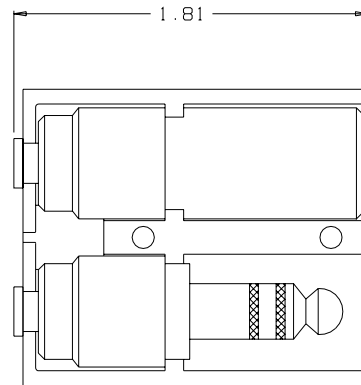


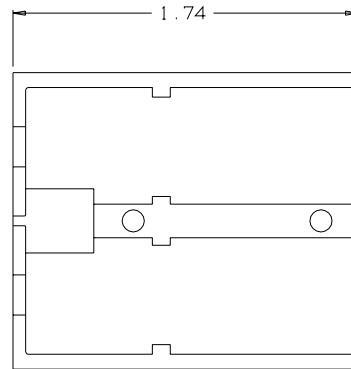
C TJ-106PM



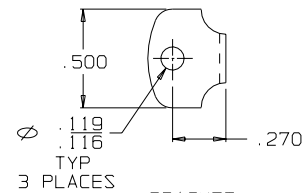
SECTION A-A



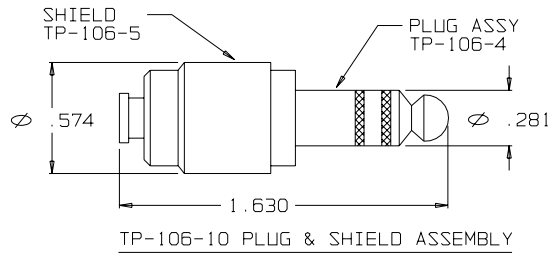
TJ-106-21 JACK & SHIELD ASSEMBLY



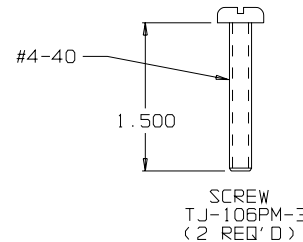
SHELL HALF
TJ-106PM-1
(2 REQ'D)



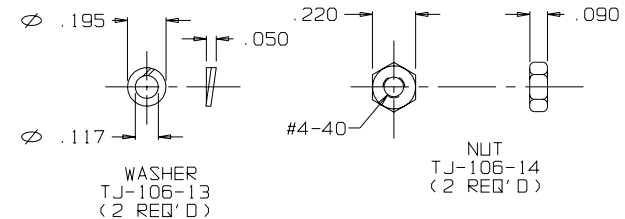
BRACKET
TJ-106PM-1
(2 REQ'D)



TP-106-10 PLUG & SHIELD ASSEMBLY

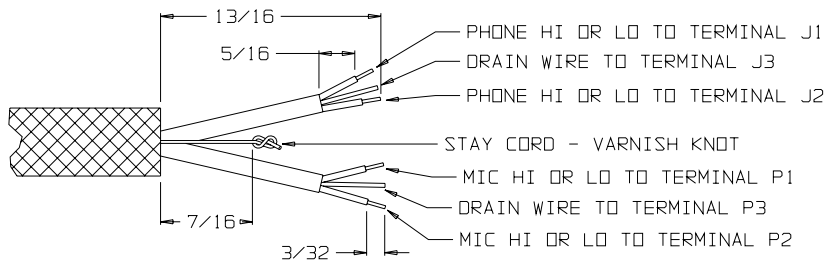


SCREW
TJ-106PM-3
(2 REQ'D)



WASHER
TJ-106-13
(2 REQ'D)

NUT
TJ-106-14
(2 REQ'D)



THIS DOCUMENT CONTAINS PROPRIETARY INFORMATION OF NEXUS, INCORPORATED AND SUCH INFORMATION MAY NOT BE DISCLOSED TO OTHERS FOR ANY PURPOSE OR USED FOR ANY PURPOSE WITHOUT THE WRITTEN CONSENT OF NEXUS.

DWN BY EWT	DATE 12/9/05	MATERIAL SEE FIELD OF DRAWING	
CHECKED BY	DATE	FINISH N/A	
APPR BY	DATE	WEIGHT	SCALE 2:1
UNLESS OTHERWISE SPECIFIED DIMENSIONS ARE IN INCHES TOLERANCES ON		TITLE TELEPHONE JACK PANEL MOUNT 6 CONDUCTOR	
.XX	.XXX	DO NOT SCALE DWG. SHEET 1 OF 1	
± .02	± .003	ANGLES ± 5°	
NEXUS STAMFORD, CONN		SIZE C	DWG. NO. TJ-106PM

LET.	REVISION	CN #	DATE	CHK.